

Emerging Technologies Production Piece

Procreate & Gravity Sketch

Look One

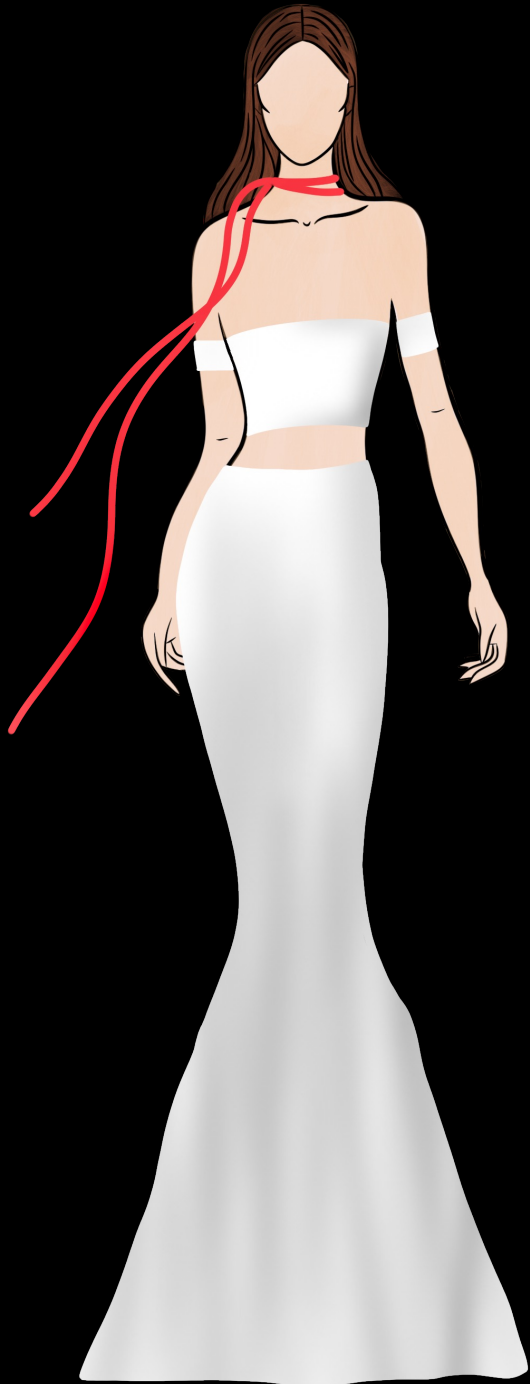
Iconic Bridal Inspired



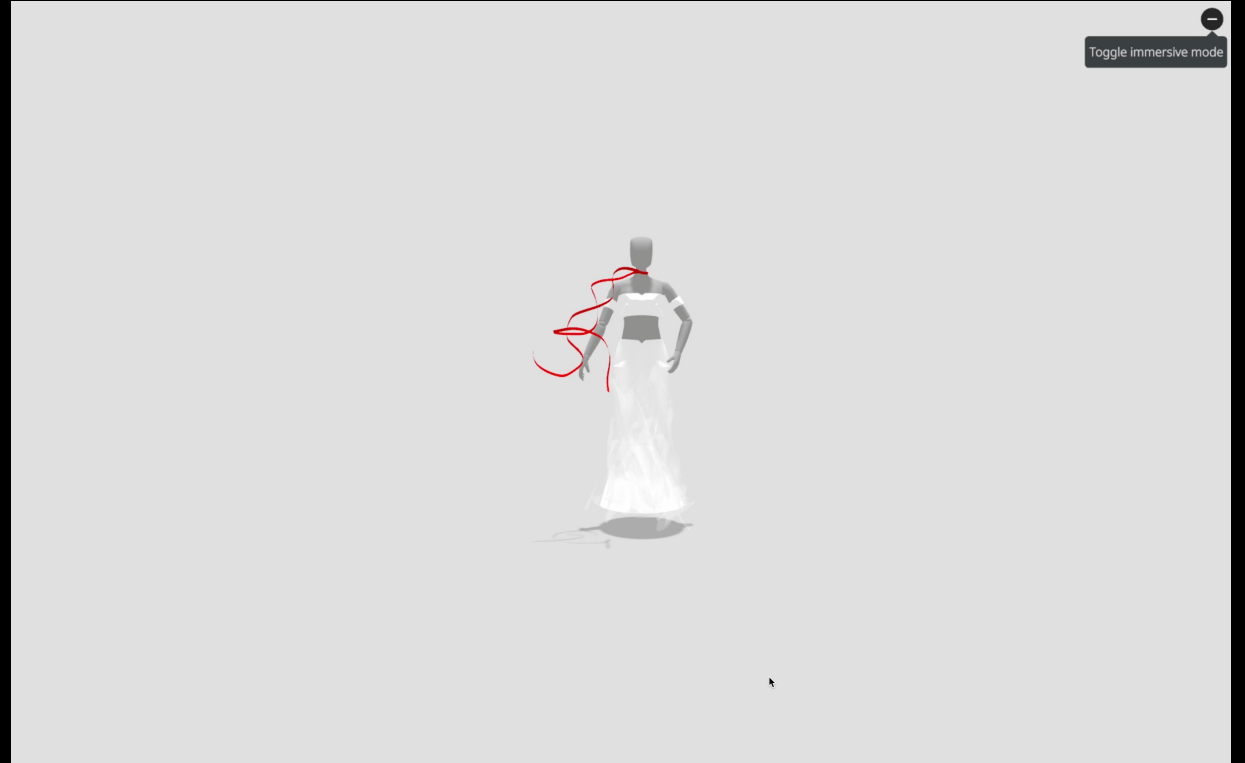
Description

Tube top with upper arm cuffs in white silk material. Maxi fishtail skirt in white silk material with a voile layer. Red ribbon neck scarf.

Workflow



3D Model Preview



Process

I drew inspiration for this initial design from a Vera Wang dress featured in her iconic bridal collection gallery on her website. Using Procreate, I sketched the desired model look, then transferred it to Gravity Sketch's landing pad, ultimately uploading it to my VR headset. Within Gravity Sketch, I utilised tools like the ribbon for the neck scarf, the volume brush for base clothing, and a custom brush to craft the voile.

Look Two

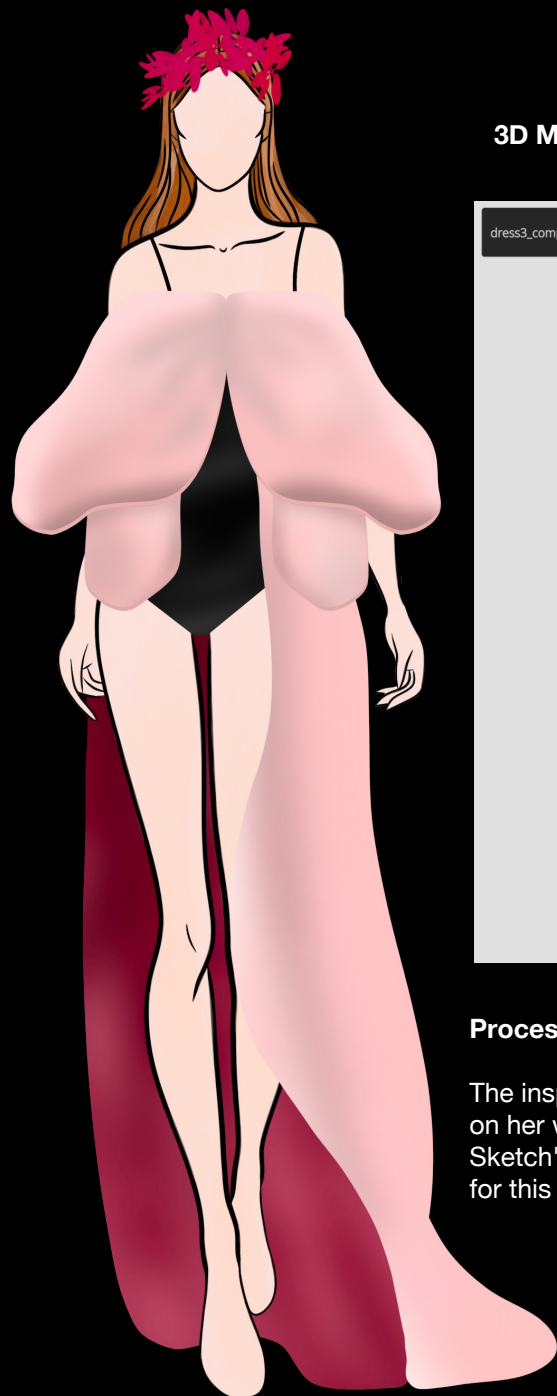
2021 Bridal Inspired



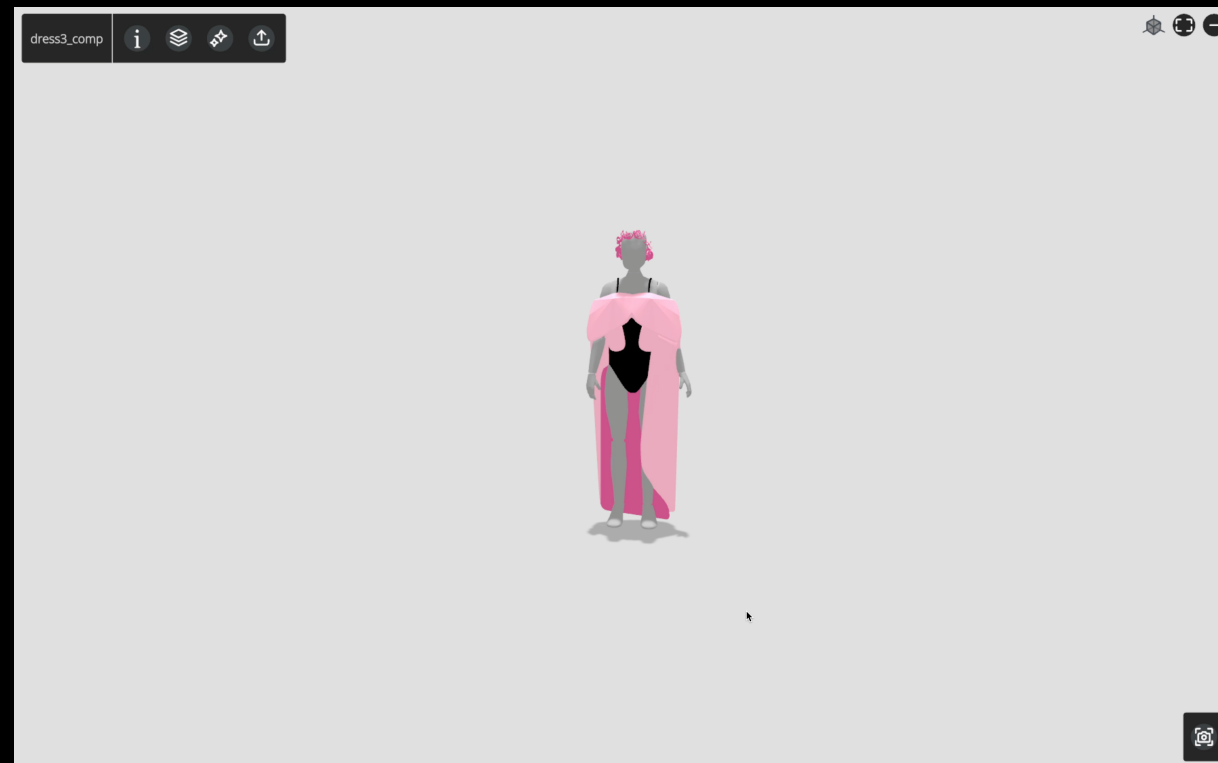
Description

Strappy bodysuit in black cotton fabric. Two-toned off-the-shoulder bow coat in Pink Silk. Flower crown in pink fabric.

Workflow



3D Model Preview



Process

The inspiration for this dress design was from Vera Wang's 2021 bridal collection which can be found on her website. I used Procreate to do the initial 2D designs which I then transferred to Gravity Sketch's landing pad, making it available on my headset. I made the most use of the volume brush for this design.

Look Three

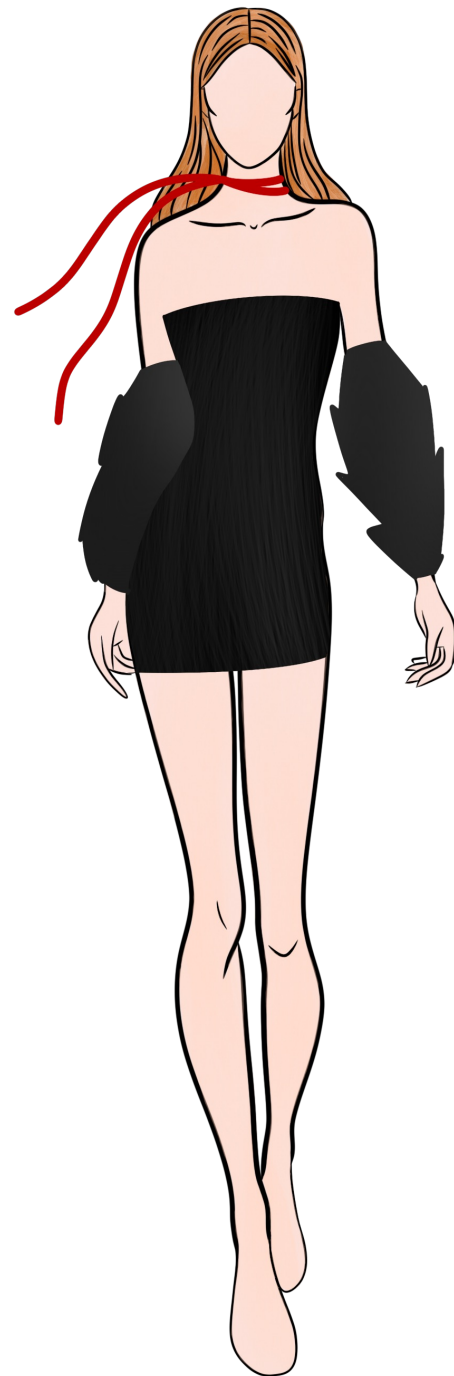
2022 Bridal Inspired



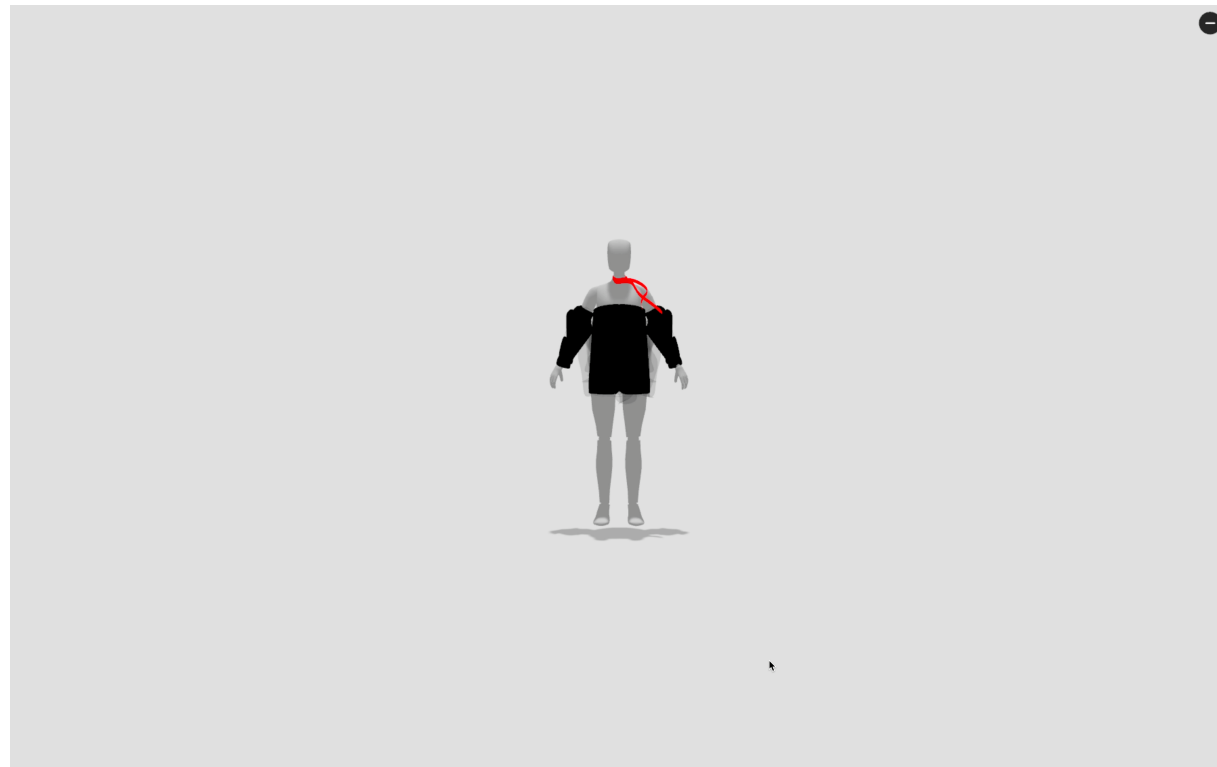
Description

Tube mini dress in black cotton with layered black voile. Puffed cotton sleeves in black.

Workflow



3D Model Preview



Process

The starting point for my design was a Vera Wang dress showcased in her 2022 bridal collection gallery on her website. Employing Procreate, I sketched the envisioned model appearance, then moved it to Gravity Sketch's landing pad and later uploaded it to my VR headset. In Gravity Sketch, I employed tools such as the ribbon for the neck scarf, the volume brush for foundational clothing, and a custom brush to fashion the voile.

Look Four

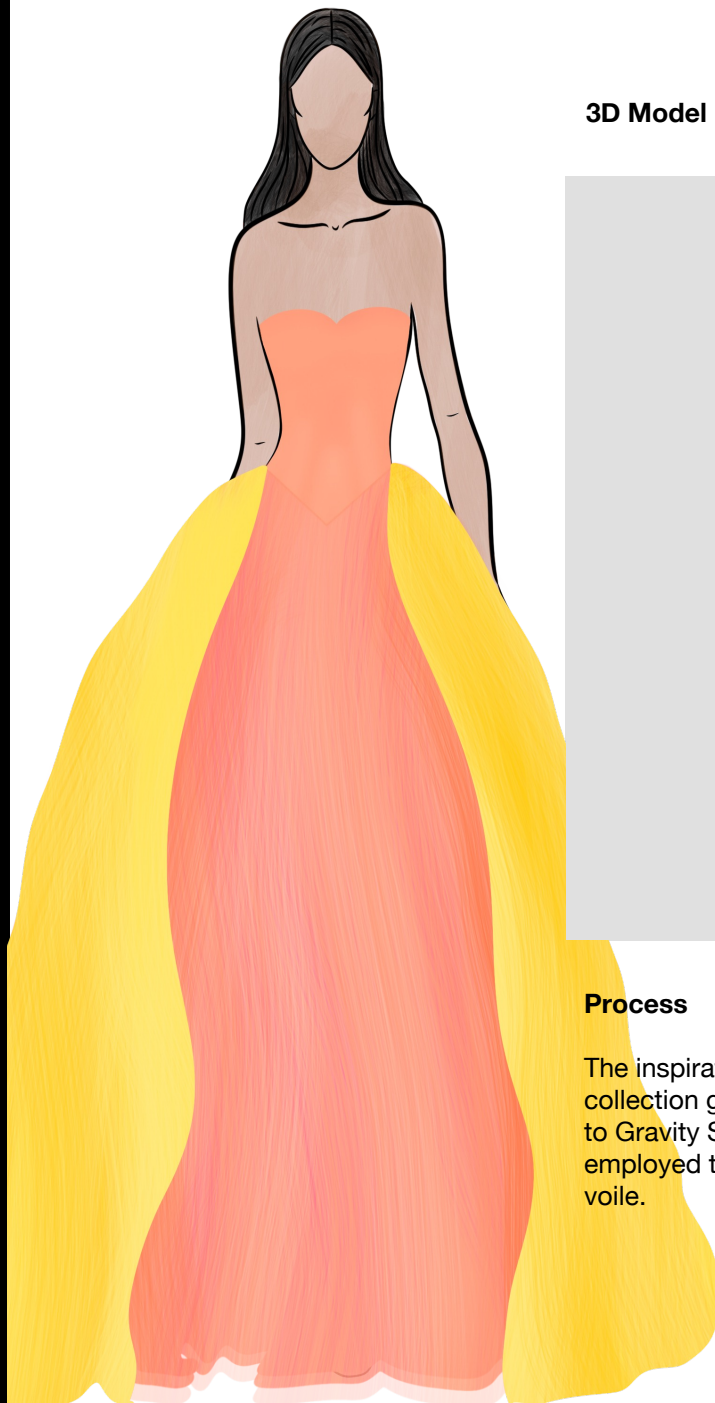
Iconic Bridal Inspired



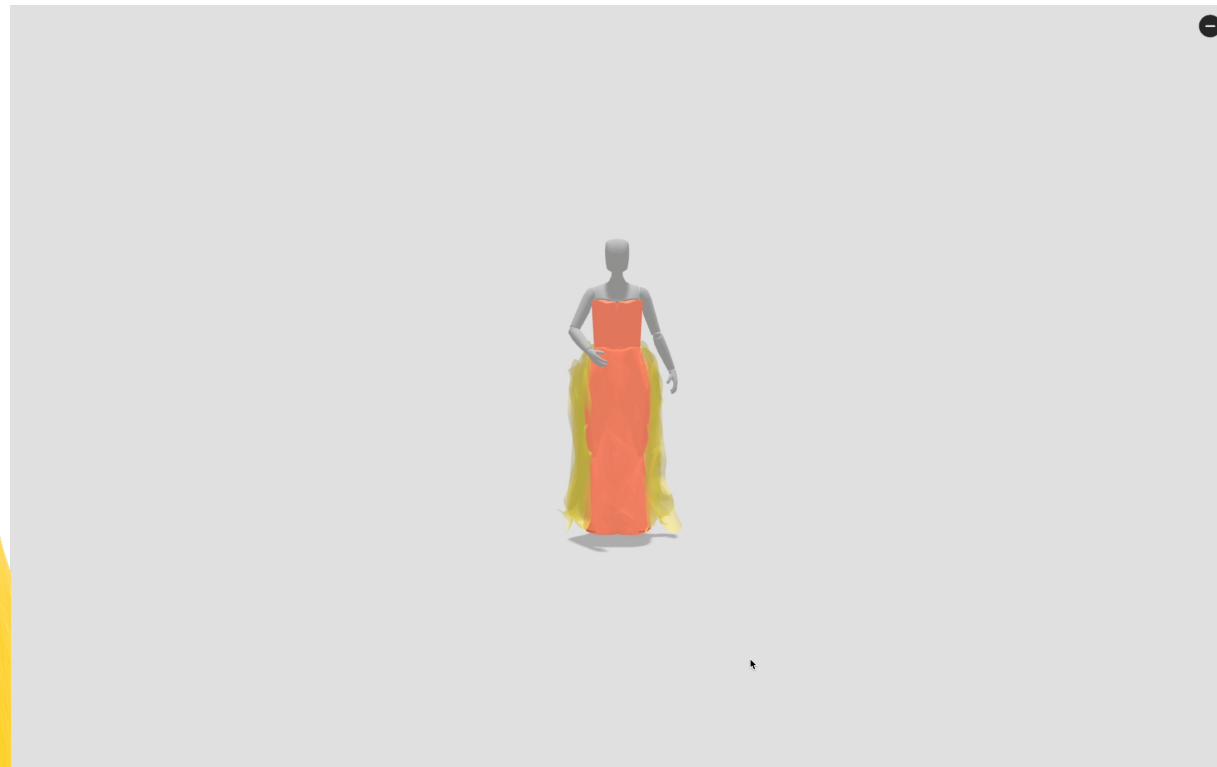
Description

Strapless loose maxi dress in peach silk with a layer of peach voile. Voile layered skirt in yellow.

Workflow



3D Model Preview



Process

The inspiration for the fourth look came from a Vera Wang dress showcased in her renowned bridal collection gallery online. I sketched the envisioned model appearance in Procreate, then transferred it to Gravity Sketch's landing pad, and finally uploaded it to my VR headset. In Gravity Sketch, I employed tools such as the volume brush for the base clothing and a custom brush to fashion the voile.